



intertextile
SHANGHAI apparel fabrics

Autumn / Winter 2023-24 秋冬趋势

intertextile

SHANGHAI apparel fabrics

Autumn / Winter

A number of inspirational trend forums highlighted the A/W 2023/24 trends. The Intertextile Directions Trend Forum presented international trends with four themes reflected the mood for next year.

The Fabrics China Trend Forums for technology & sustainable fashion, fashion focus and accessories presented the domestic fabric trends forecast by CTIC.

Overview

FORWARD

We envision embarking on a journey in search of meaning, having roamed the temporal space amid evermore volatile change, swifter than ever before. The upcoming challenge and the stage that lies beyond await as the way forward beckons all part of the mix set to spawn creation of the coming era. Facing up to the future, we herald a fresh start right here, right now, to take new action for a brighter view tomorrow or tomorrow's tomorrow prevailing over today. It's action time to step forward via broader connections and encounters with a new reality born of a blend of virtual and physical, where science and humans combine.

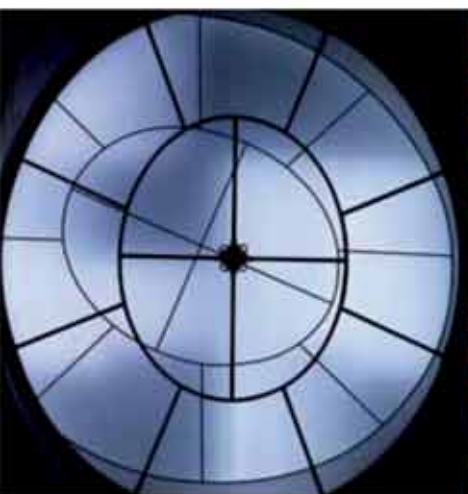
FORWARD

Science +
科学 +

Craft +
工艺 +

Free +
自由 +

Premium +
尊贵 +



Fashion View



'Fashion, be ambitious!'

Fashion that transfixes all those in sight; spearheading the richest of culture and unrivalled creations by artists and designers...however heavy current pandemic challenges and myriad issues have been. But despite these downsides, pinning our hopes on passion for fashion, epic energy and pulsating positivity and absolute audacity. It has never been more vital to envelope ourselves and encourage ambitions to go beyond fashion alone.



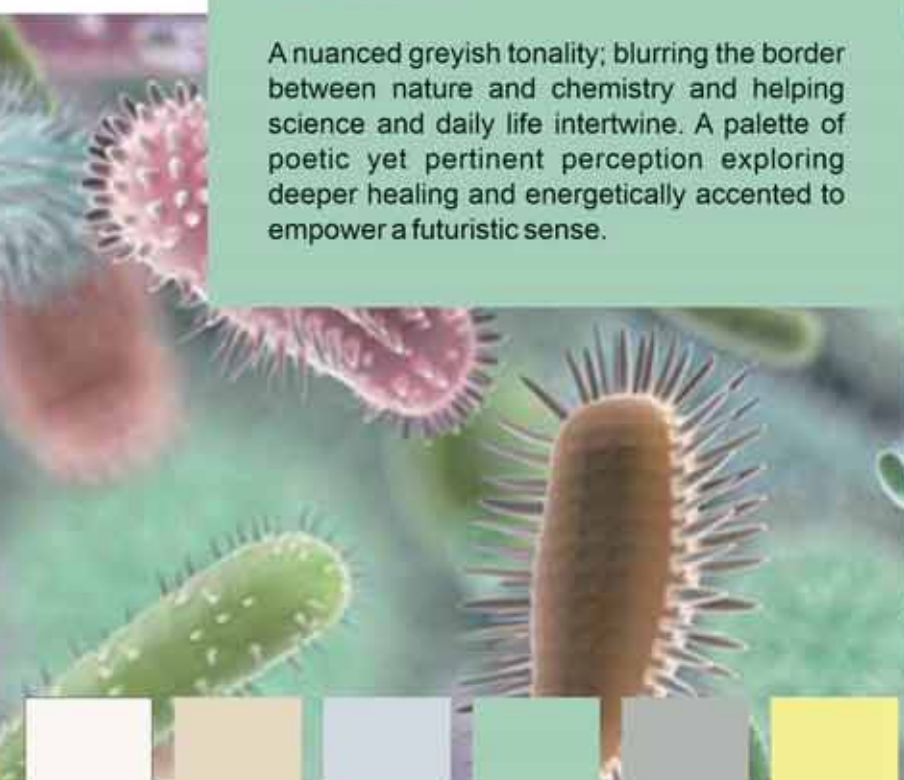
Science +

Science evolves as ceaselessly as those who seek it; day-in day-out. Endlessly accumulated trial and effort spawns progress that brings with it discoveries, unknowns and scope to reinvent new future-focused perspectives in our daily lives. Beyond biological and technological advances lie hope and energy that shine. Let us continue our quest of healing while keeping safety and compassion firmly on board.

Science +

Colours:

A nuanced greyish tonality; blurring the border between nature and chemistry and helping science and daily life intertwine. A palette of poetic yet pertinent perception exploring deeper healing and energetically accented to empower a futuristic sense.



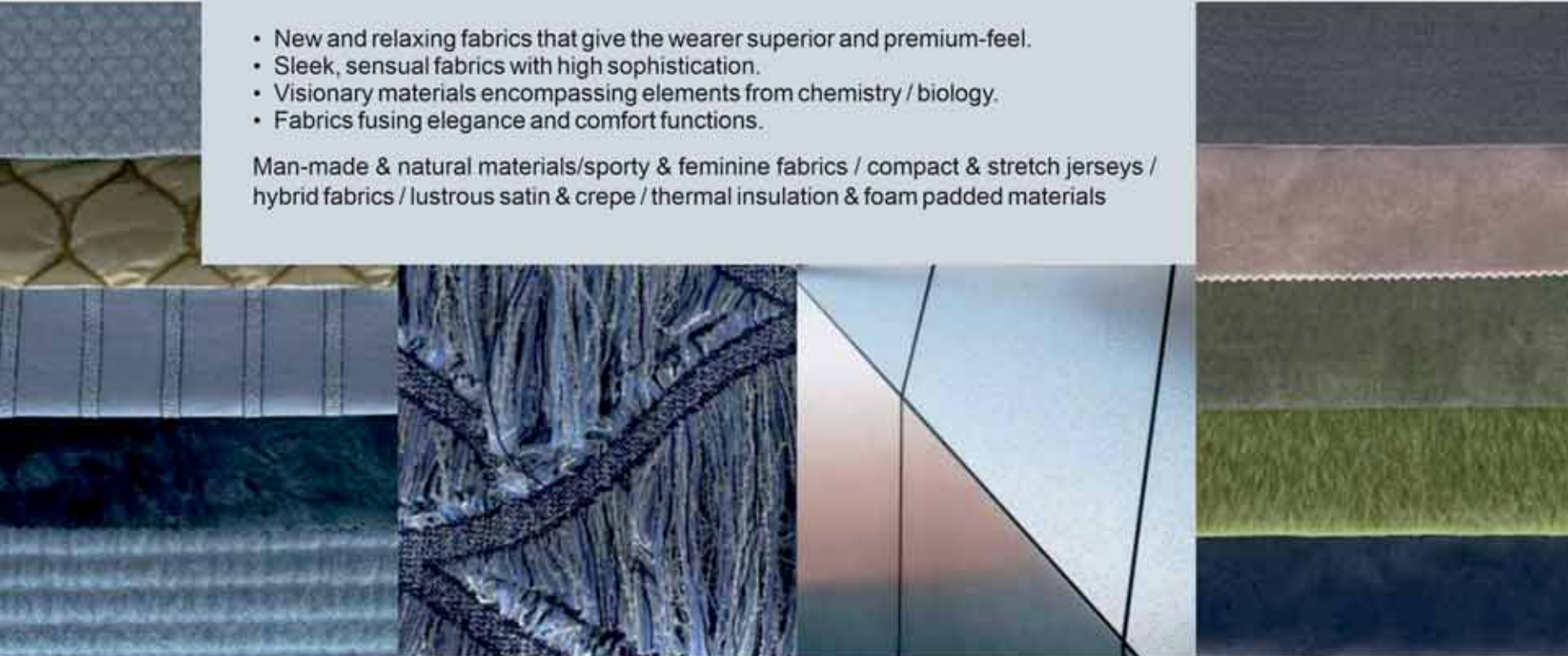
PANTONE® 11-4201	PANTONE 13-0907	PANTONE 13-4105	PANTONE 13-6108	PANTONE 15-0000	PANTONE 11-0620	PANTONE 12-1010	PANTONE 15-0545	PANTONE 17-4540	PANTONE 17-3920	PANTONE 15-1157	PANTONE 19-3952

Science +

Fabrics:

- New and relaxing fabrics that give the wearer superior and premium-feel.
- Sleek, sensual fabrics with high sophistication.
- Visionary materials encompassing elements from chemistry / biology.
- Fabrics fusing elegance and comfort functions.

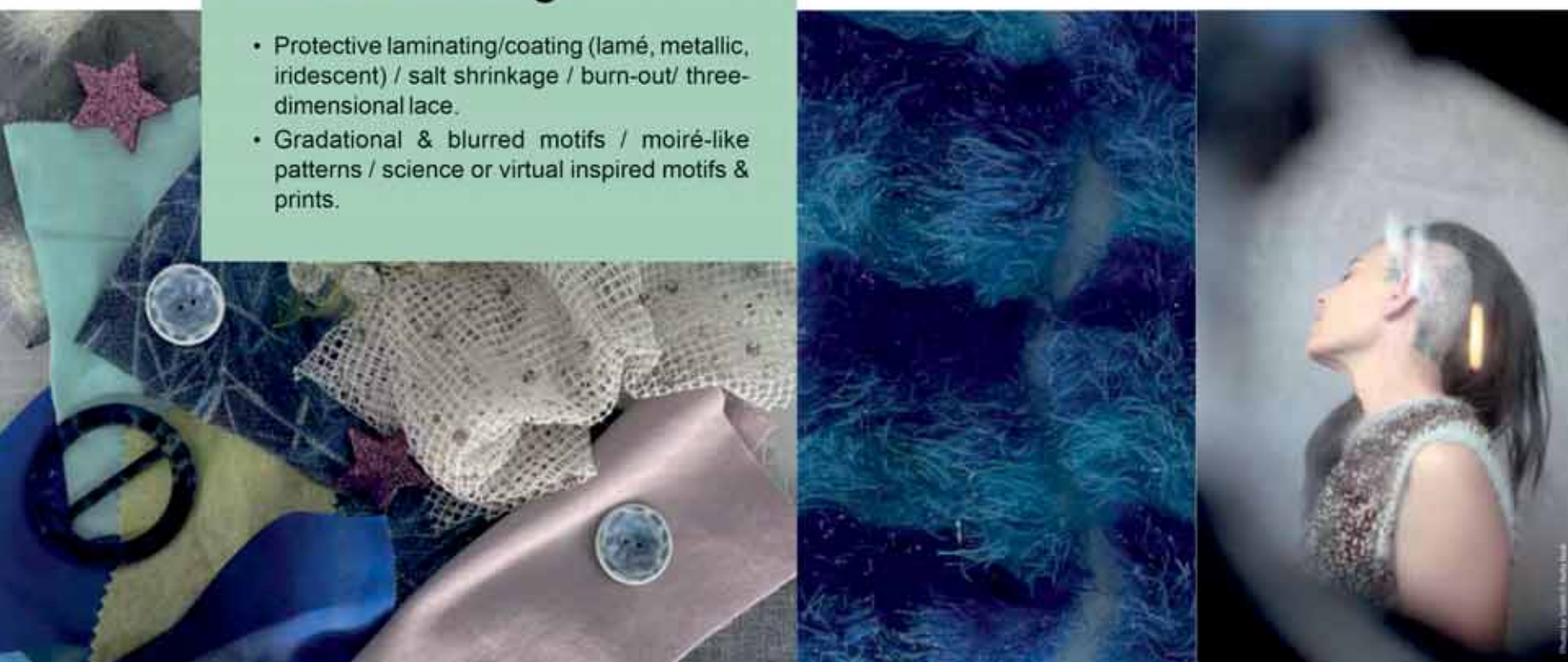
Man-made & natural materials/sporty & feminine fabrics / compact & stretch jerseys / hybrid fabrics / lustrous satin & crepe / thermal insulation & foam padded materials



Science +

Prints & finishing:

- Protective laminating/coating (lamé, metallic, iridescent) / salt shrinkage / burn-out/ three-dimensional lace.
- Gradational & blurred motifs / moiré-like patterns / science or virtual inspired motifs & prints.





Craft +

Sustainable, ethical, SDGs...our daily lives in ongoing flux, within the semantic setting of these words, bound for a sustainable society of tomorrow. With ever more intimate lives, we revisit and reconsider all things; old and new. We even rethink how to optimise manufacturing within our daily status quo. What is the 'must' that we truly need now? Striving to better ourselves; remaining aware of the inner comfort nature delivers and infusing a handcrafted feel to cherish human warmth and tenderness.

Craft +

Colours:

A palette mirroring aesthetic sensitivity and featuring environmentally aware and earth-centric hues. Straddling shades inspired by nature to technological tints; awash with abundant individuality and an upcycling mindset.



PANTONE®
17-0806

PANTONE
18-3922

PANTONE
14-0826

PANTONE
15-4306

PANTONE
16-0924

PANTONE
18-1137

PANTONE
15-0326

PANTONE
16-1332

PANTONE
15-5210

PANTONE
16-1143

PANTONE
18-3944

PANTONE
17-3612

Craft +

Fabrics:

- Myriad recycled, eco and organic fabrics, alongside other elements that circulate resources.
- Textiles that not only sustain the global environment but also regenerate for the better.
- Timeless materials and remade with them, by cherishing old things.
- Fabrics leveraging vegetable and botanical dyeing.

Bulky & pile fabrics / corduroy / plain knits / basic fabrics / hairy, animal hair blended fabrics / hybridisation of wool-bast fibres / felted materials / eco-fur/bio leather/jacquard glitter knit/low-gauge knit/ compact dobby/ eco-raschel / macramé



Craft +

Prints & finishing:

- Bonding/flocked / quilting / needle-punching / frayed & crease effects / uneven dyeing.
- Animal motifs / camouflage patterns.





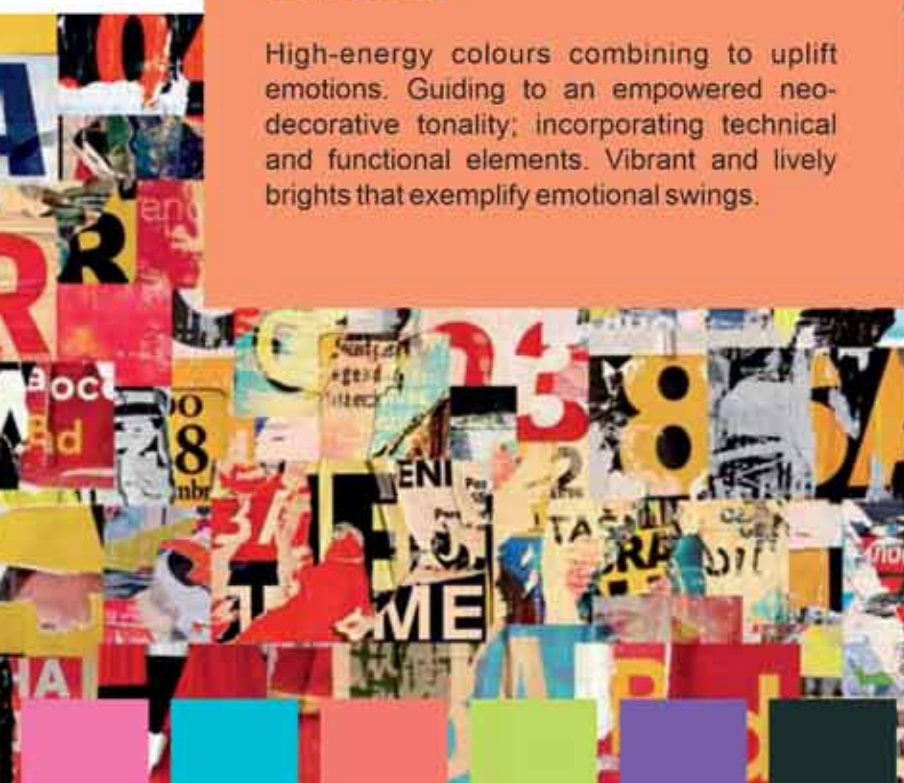
Free +

Design fantasy, expressing our era in explosive colour. Boundless imagination and ideas beyond borders. The narrative of this epic is one of ingenious designs that defy conventional wisdom and epitomise our era. Chromatic energy transcending time; uplifting us and letting our feelings flow. Boosts us to release our emotions. Optimism adorns us on our quest for esoteric inspiration across genres through designs that brim with the vibrancy of colours.

Free +

Colours:

High-energy colours combining to uplift emotions. Guiding to an empowered neo-decorative tonality; incorporating technical and functional elements. Vibrant and lively brights that exemplify emotional swings.



PANTONE®
16-2126

PANTONE
16-4535

PANTONE
17-1656

PANTONE
13-0540

PANTONE
18-3533

PANTONE
19-0405

PANTONE
17-5734

PANTONE
14-0955

PANTONE
19-4050

PANTONE
19-1763

PANTONE
11-0701

PANTONE
16-1442

Free +

Fabrics:

- Appealing decorative fabrics anchored by high designability.
- Fantasy-inspired fabrics with the abundant creativity of chromatic plays.
- Materials blending retro and modern feels for emotional expressions.
- Digital/technological and three-dimensional fabrics.

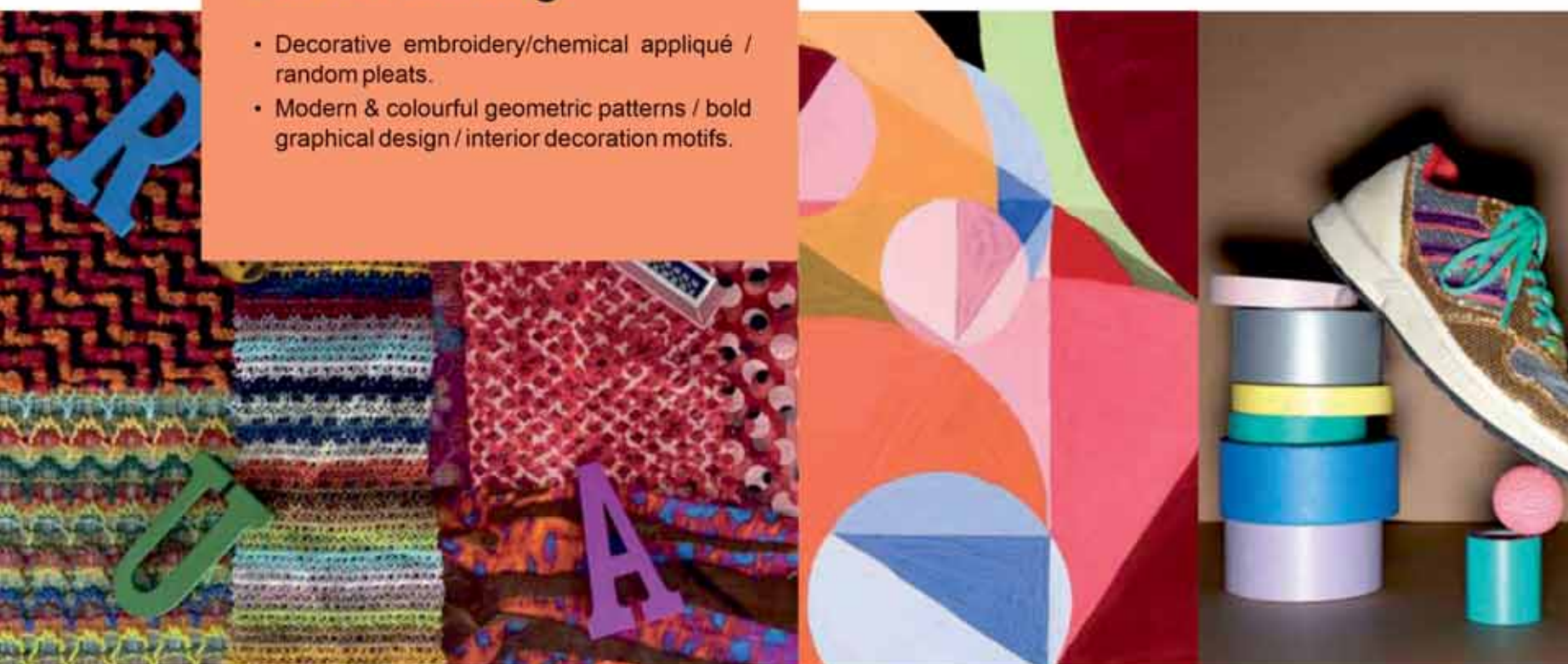
Computer jacquard / velour, velvet / inlay / application of fancy yarns / decorative tweed/ art-inspired geometry jacquard/wide-patterned jacquard/ Goblin weave / multi-coloured-border knit/ tech fleece / dense gabardine



Free +

Prints & finishing:

- Decorative embroidery/chemical appliqué / random pleats.
- Modern & colourful geometric patterns / bold graphical design / interior decoration motifs.





Premium +

Immersing allcomers in a wondrous dreamy tempo. Encountering advanced technological charms awash with stunning positivity. A journey through desire, taking us to the unknown within the mystical profundity of an intricate universe. Along the way, envisaging a life of fresh awareness and purpose while rediscovering spirituality and value a new. A dramatic premium scene unfolds infinitely in the dreamlike immersion.

Premium +

Colours:

A palette on parade, luxuriously and glamorously surging in sophistication. Fusing dramatic and mysterious darks with mineral-based bronze and gold for a lustrous and shady premium-feel reflection.



PANTONE®
19-1314

PANTONE
19-4914

PANTONE
18-5210

PANTONE
19-1725

PANTONE
18-4537

PANTONE
19-1218

PANTONE
16-0836

PANTONE
18-1613

PANTONE
19-4007

PANTONE
19-3810

PANTONE
19-4027

PANTONE
19-3737

Premium +

Fabrics:

- Subtle yet stunning fabrics with glittering elements of dreams and reality.
- Techno/fantasy-centric and luxury fabrics.
- Glam-classic silky fabrics alongside splendid / lavish materials.
- New texture and ornamental elements for superior gorgeousness.

High-performance materials / premium wool / wool-silk blends / compact & soft fabrics / alpaca wool/double-face/decorative materials/glamorous & lustrous fabrics / fluid and supple jersey / materials with relief effects/ couture fabrics/bulky home-spun



Premium +

Prints & finishing:

- Laser, enamel processing / embossed / 3D post-processing/foil finish.
- Graphical patterns with optical effects / monotone grids / prints superimposed / paisley motifs / a wealth of embroidery.

